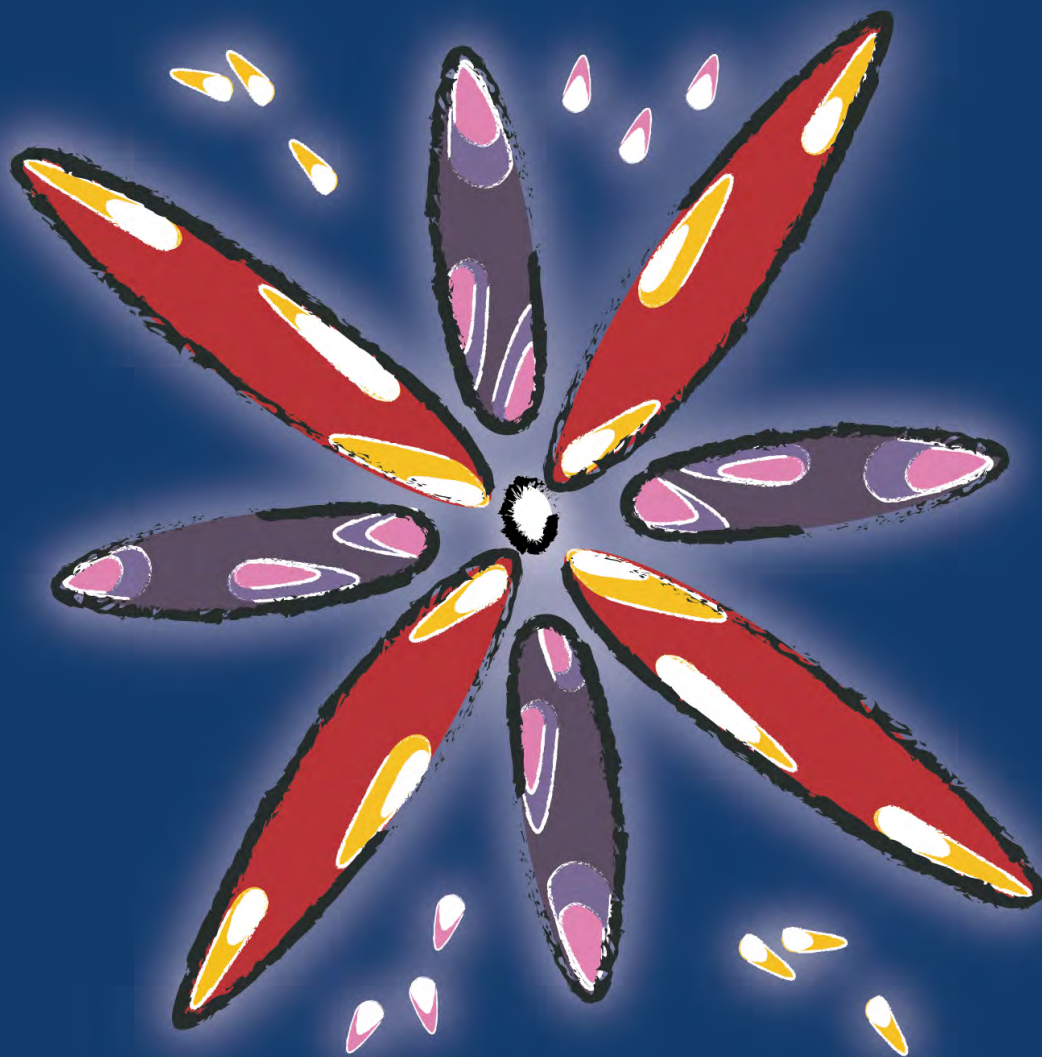


MORNING STAR AND EVENING STAR

Learning Resources



Suggested Learning Plans

QLD Instrumental Guide

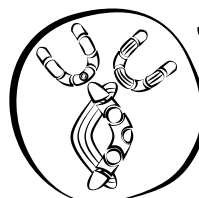


Australian
Music
Examinations
Board

ameb.edu.au

A M E B
ONLINE
ORCHESTRA

onlineorchestra.ameb.edu.au



YUGAMBEH YOUTH
Aboriginal Corporation

yugambehyouth.com.au



Instrumental Performance Qld Instrumental Music Curriculum

Curriculum alignment

Meter: $\frac{4}{4}$ Tempo: Brightly ♩ = 116

Instrument	Suggested level	Curriculum concepts (at level)	Reinforces concepts (below level)	Pre-teaching (beyond level)	Range
Flute	Level 5	Ensemble playing key, rhythms (crotchet triplets)	Range, scale key		
Oboe	Level 4	Range, scale key, rhythms (dotted quaver/semiquaver)		Ensemble playing key	
Clarinet	Level 4	Range, scale (D Major), rhythms (dotted quaver/semiquaver)		Ensemble playing key	
Bassoon	Level 5	Ensemble playing key, rhythms (crotchet triplets)	Range, scale key		
Trumpet	Level 5	Ensemble playing key	Scale (D Major), rhythms (dotted quaver/semiquaver)	Range	
French Horn	Level 5	Range, scale key (G Major), ensemble playing key, rhythms (crotchet triplets)			
Trombone	Level 5	Range, ensemble playing key	Syncopation, scale key		
Euphonium	Level 4	Scale key	Syncopation	Ensemble playing key	
Tuba	Level 5	Range, ensemble playing key	Syncopation, scale key		
Percussion	Level 3	Instrumentation, scale key	Ensemble playing key		
Violin	Level 5	Range, rhythm (syncopation, crotchet triplets)	Ensemble playing key, scale key		
Viola	Level 5	Rhythms (crotchet triplets)	Range, ensemble playing key, scale		
Cello	Level 5	Range, rhythms (dotted quaver/semiquaver)	Ensemble playing key, scale key		
Double bass	Level 3	Syncopation	Range, ensemble playing key, scale	Chromatic passage	

